

Craft Exotica

HANDICRAFTS AND MORE

(Manufacturer and Exporter of Metal Handicrafts, Antique Reproductions and Nautical Gift items)



We at Craft Exotica, understand the importance of embracing the latest trends enabling the businesses to stay relevant and competitive in ever-evolving markets.

Our ultimate goal is to meet and exceed the diverse demands of our esteemed customers, ensuring their satisfaction is at the heart of everything we do.

Some of the areas wherein we specialize are:



- Nautical Decor
- Medieval Collectibles
- Lighting Products
- Home Decor
- Wooden Handicrafts
- Surveying Tripods and Surveying Compass



FOR ANY INQUIRIES ON OUR PRODUCTS AND PRICING, PLEASE REACH OUT TO US AT



hello@craftexotica.com



www.CraftExotica.com



CraftExotica



[craft.exotica.gifts](https://www.instagram.com/craft.exotica.gifts)



+65 - 8032 4786  +91 - 87910 82285

Scan for website





PRODUCT CODE: #CE40201

ANTIQU BRASS CLOCK

Size : 3.5 x 3 x 5.5 inch (H) , 8.9 x 7.6 x 14 cm Approx



PRODUCT CODE: # XXXX

ENGRAVED POCKET COMPASS

Compass: 50mm x 18mm,
Leather Case: 2.5 x 2.5 x 1 Inch



PRODUCT CODE: #CE10402

BRASS LEATHER TELESCOPE

Size of Telescope : 1.7 x 1.7 x 5.7 inches, 4.3 x 4.3 x 14.5 cm approx.
Size of Box : 6 x 2.2 x 2.25 inches, 15.2 x 5.6 x 5.7 cm approx.



PRODUCT CODE: #CE10202

NAUTICAL SEXTANT WITH WOODEN BOX

Size - 5.75 x 5.75 x 3.3 inch, 14.6 x 14.6 x 8.4 cm



PRODUCT CODE: #CE10302

BRASS TABLE TOP GLOBE

Size : 6 x 10 x 8 inches approx.



PRODUCT CODE: #CE10401

VINTAGE BRASS MARINE TELESCOPE

Size : 20" inches approx.



PRODUCT CODE: #CE10306

ANTIQU BRASS ARMILLARY SPHERE GLOBE

Size: 29 CM (Height) ; 12 CM (Base) Approx



PRODUCT CODE: #CE10301

ANTIQU BRASS ARMILLARY SPHERE GLOBE

Finish : Antique Finish. Available size : 5 inch ,6 inch,8 inch ,11.50 inch,



PRODUCT CODE: #XXXX

NAUTICAL BRASS ALIDADE COMPASS

Size: 5 Inches

MEDIEVAL COLLECTIBLES



PRODUCT CODE: #CE20101

MEDIEVAL SPARTACUS KNIGHT HELMET

size : 1.8 kg approx.



PRODUCT CODE: #CEXXXX

ANTIQUÉ IMPERIAL ARMOUR HELMET



PRODUCT CODE: #CE20105

ANTIQUÉ ROMAN CENTURION HELMET

Size – 12 x 9 x 17 inch, 30.5 x 22.9 x 43.2 cm Approx



PRODUCT CODE: #CE20104

COPPER FINISH ARMOUR HELMET

Weight : 1.8 kg Approx
Ear to ear : 8.5 inches, 22 cm approx.
Inner Diameter from Front to Rear : 8 inches, 20.3 cm approx.
Circumference : 27 inches, 68.5 cm approx.



PRODUCT CODE: #CE 20106

KING LEONIDAS HELMET

Weighs 1.7kg approx.



PRODUCT CODE: #CE20103

MEDIEVAL BARBUTE HELMET

Inner Diameter : Front to back 9"
Ear to Ear : 8"
Circumstances : 26.69"
Weight: 2.60 kg (approx)



PRODUCT CODE: #CE20202

MEDIEVAL ARMOR SHIELD

Size – 30 Inches



PRODUCT CODE: #CE20203

MEDIEVAL KNIGHT TEMPLAR SHIELD

Overall Length: 30" (approx)
Width: 19.125"
Material: 18 Gauge Steel
Weight : 4 kg (approx)



PRODUCT CODE: #CE20204

MEDIEVAL CRUSADER SHIELD

MATERIAL : 18 Gauge Steel
DIMENSION: 24" in height
COLOR: As seen in picture



PRODUCT CODE: #CEXXXX

STEEL ARMOR GLOVES CRUSADER

Made from 18 Gauge Steel



PRODUCT CODE: #CE20303

VIKING AUTHENTIC MEDIEVAL HORN MUG

Viking mugs hold 20 oz.



PRODUCT CODE: #CE20302

VIKING DRINKING HORN WITH STAND

NOTE : As these horns are made of natural there will be difference in shape and shades.



PRODUCT CODE: #CE30103

NAUTICAL STUDIO SEARCHLIGHT TRIPOD

-Constructed with aluminum, steel and teak wood

- Overall Height : 38" (adjustable)
- Maximum Wattage Per Bulb 60.



PRODUCT CODE: #CE30101

TRIPOD FLOOR LAMP

Foot switch: on / off

Cable: textile cable approx. 300 cm / 120 inch (choose from 10 different colors see "Personalization")

Version: E27, max. 200 watts



PRODUCT CODE: #CE30102

WOODEN TRIPOD FLOOR LAMP

Total Height - 40",
Ground Demeter -19",
Total Weight - 1.800 Kg
Material: Aluminium, wood



PRODUCT CODE: #CEXXXX

METAL CLOCK PEICE

Various sizes and colours



PRODUCT CODE: #CE40101

ANTIQUE JUTE ROPE DOOR STOPPER

Material : Jute

Finish : Antique

Weight : 1.480 kg Approx.

Jute Knot Ball Diameter : 5 inch (12.7 cm) Approx.

Overall Height : 12 inch (30.48 cm) Approx.



PRODUCT CODE: #CE40102

WHITE JUTE ROPE SHELVES DRAWER KNOBS

Material: Jute Rope & Iron

Finish: Natural as per picture.

Size: Centimetres: 9X4.75X4.75.



PRODUCT CODE: #CEXXXX

BRASS ANTIQUE GRAMOPHONE DUMMY

Dimensions (L x W x H) : 4 x 4 x 9 Inch
(10.16 x 10.16 x 22.86 cms)



PRODUCT CODE: #CEXXXX

VINTAGE ROTARY TELEPHONE

11.61 x 10.51 x 9.21 inches



PRODUCT CODE: #CEXXXX

ANTIQUÉ LANDLINE WIRED TELEPHONE

7.09 x 9.84 x 12.6 inches



PRODUCT CODE: #CE40503

BRASS NAUTICAL LIGHT LANTERN

Size : 2.9 x 2.9 x 11 inch, 7.4 x 7.4 x 27.94 cm approx



PRODUCT CODE: #CE40502

COPPER BRASS ELECTRIC LANTERN

Size: 14 inch (Height) Base: 5.5" inches (Diameter)



PRODUCT CODE: #CE40504

VINTAGE ANTIQUE SHIP OIL LANTERN

Size : 2.9 x 2.9 x 6 inch, 7.4 x 7.4 x 15.24 cm approx.



PRODUCT CODE: #CE40502

PORT HOLE WITH GLASS WALL DECOR

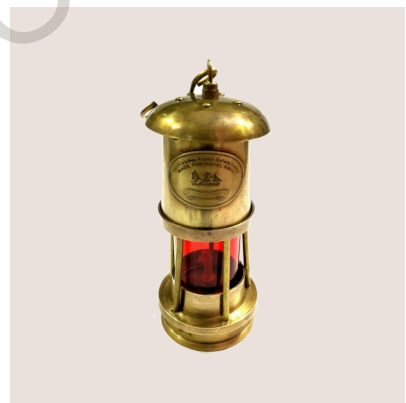
Material : Aluminium & Glass
Finish : Chrome
Weight : 1.760 kg Approx.
Mirror Face : 9.7 inches ,24.6 cm Approx
Overall Size : 15 x 15 x 2.5 inches, 38 x 38 x 7 cm



PRODUCT CODE: #CE40501

NAUTICAL MARITIME BRASS PORTHOLE

Material: Brass & Glass
Finish: As shown
Mirror Face 8.25 inches ,21 cm Approx
Overall Size : 12 x 12 x 2 inches, 30.5 x 30.5 x 5 cm



PRODUCT CODE: #CE40504

VINTAGE ANTIQUE SHIP OIL LANTERN

Size : 2.9 x 2.9 x 6 inch, 7.4 x 7.4 x 15.24 cm approx.

WOODEN HANDICRAFTS



PRODUCT CODE: #CEXXXX

SOLID BRASS SHIP BELL

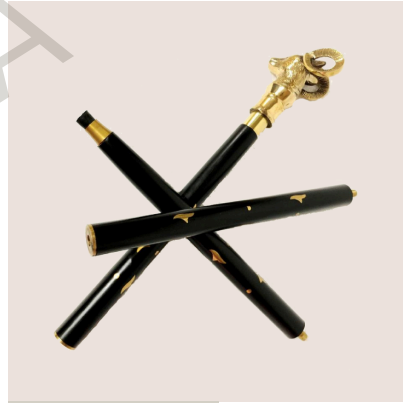
size: 7" inches



PRODUCT CODE: #CE50108

WOODEN WALKING STICK BRASS JAGUAR HANDLE

Material : Brass ; Wood and Leather
Finish : Shiny Brass Handle
Total Length with Handle : 37 inch Approx



PRODUCT CODE: #CE50110

BRASS GOAT HANDLE WALKING STICK

Material : Brass and Wood
Finish : Shiny Brass Handle
Total Length with Handle : 37 inch Approx



PRODUCT CODE: #CE40203

MARITIME BRASS TABLE TOP CLOCK

Size : 5.1 x 3.0 x 2.4 inches, 12.95 x 7.62 x 6.09 cm approx.



PRODUCT CODE: #CE40401

VINTAGE BRASS SAND TIMER

Size : 3 x 3 x 5 inches, 8 x 8 x 13 cm Approx
Weight : 950 grams



PRODUCT CODE: #CEXXXX

TORTOISE COUNTER DESK BELL

Size Of Timer : 4.75 x 4 x 7.5 inches, 12 x 10 x 19 cm approx.



PRODUCT CODE: #CE10102

MAGNIFIER FULL BRASS

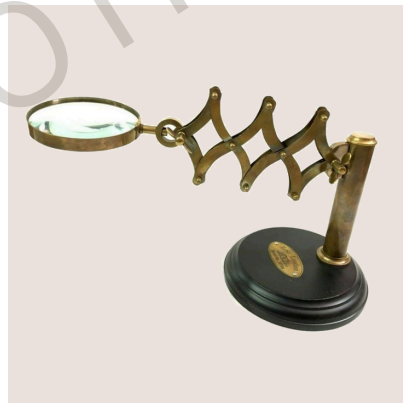
Dimensions: 13cmX5.5cmX1cm



PRODUCT CODE: #CE10104

ADJUSTABLE MAGNIFYING DESK LENS

Magnification : 4x Approx ; Lens Diameter : 3" inch, 7.62 cm Approx ; Height : 9.5" inches



PRODUCT CODE: #CE10106

ADJUSTABLE MAGNIFYIG GLASS

5x Approx ; Lens Diameter : 4 inch, 10 cm Approx ; Base Diameter : 6 inch, 15.24 cm Approx ; Total Height upto 17.5 inches, 44.5 cm Approx